

Indoor and Outdoor Diplexers

Jumper (indoor) Manual

1. Product Summary

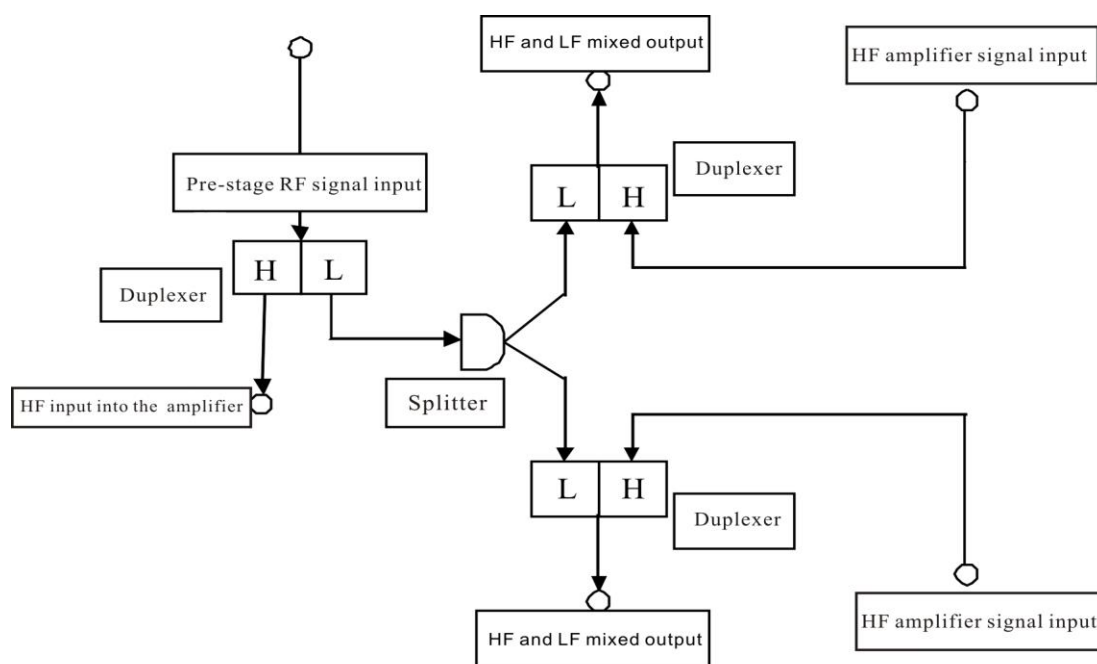
This jumper is suitable to the line which is using the two-way output unidirectional amplifier connection type in the radio and television network system. Duplex filter in the jumper split the low-frequency DATA signal and TV signal. The TV signal is amplified by the unidirectional amplifier, then input to the jumper and mixed with the low-frequency DATA signal, and output to the next stage.



2. Characteristics Description

- Connect unidirectional amplifier, achieve low-frequency signals direct transmission
- Two-way, indoor power-pass
- Interface type: F-type socket, male/female
- 6 coaxial interfaces
- Support 60V power-pass

3. Block Diagram



4. Technique Parameters

35/47 frequency range

| Item | Frequency range | Parameters |
|------------------------|-------------------------|---------------------|
| Insertion loss | 5-35MHz | $\leq 6.0\text{dB}$ |
| | 47-1000MHz | $\leq 1.3\text{dB}$ |
| Attenuation | 47-1000MHz | $\geq 50\text{dB}$ |
| | 5-35MHz | $\geq 45\text{dB}$ |
| Return loss Log Mag | 5-35MHz / 47-1000MHz | $\geq 16\text{dB}$ |

65/85 frequency range

| Item | Frequency range | Parameters |
|------------------------|---------------------|---------------------|
| Insertion loss | 5-65MHz | $\leq 6.0\text{dB}$ |
| | 85-1000MHz | $\leq 1.3\text{dB}$ |
| Attenuation | 85-1000MHz | $\geq 50\text{dB}$ |
| | 5-65MHz | $\geq 45\text{dB}$ |
| Return loss Log Mag | 5-65MHz /85-1000MHz | $\geq 16\text{dB}$ |